



## ST. JOHNS WOOD PARK

LONDON, NW8

£1,300 PER WEEK

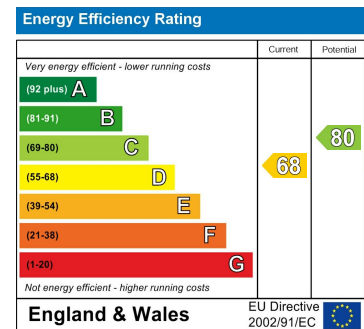
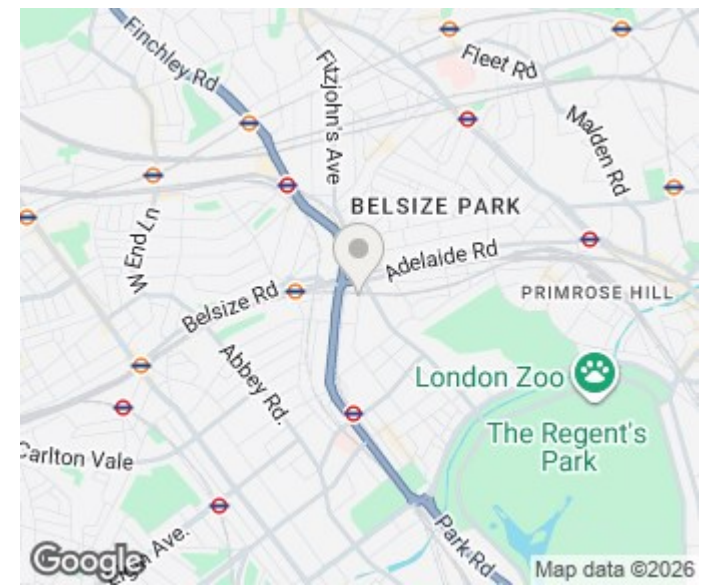
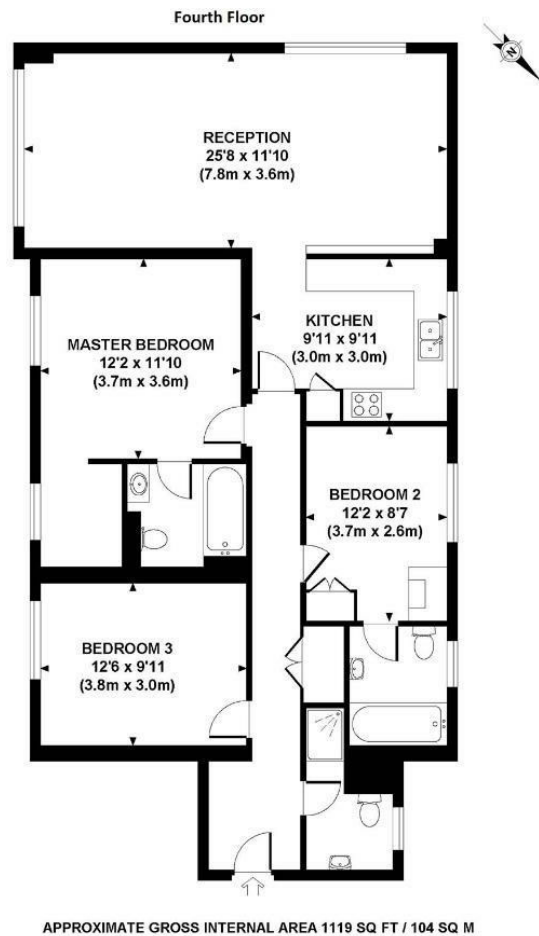
Stunning three bedroom, three bathroom apartment situated in this gated development a short walk from St Johns Wood and Swiss Cottage. The property benefits from private terrace with bespoke design.

Benefiting from large reception room with separate dining area, fully fitted/equipped kitchen with breakfast area and a separate wc.

Boasting hard wood flooring, beautifully designed, air condition throughout, ample built in storage, Italian stone worktops, Bosch appliances, LED efficient lights, dimmed switches, alarm and video entry phone.

Boydell Court further boasts on-site 24 hour porter, secure off street parking, double glazing, alarm and video entry phone.

**PMP** | INTERNATIONAL



Agents Note: Whilst every care has been taken to prepare these particulars, they are for guidance purposes only. All measurements are approximate and are for general guidance purposes only and whilst every care has been taken to ensure their accuracy, they should not be relied upon and potential buyers/tenants are advised to recheck the measurements

London  
PMP International  
94 Belsize Lane  
Belsize Park  
London  
NW3 5BE

020 7701 2878  
info@pmpi.co.uk  
www.pmpi.co.uk

**PMP** | INTERNATIONAL